

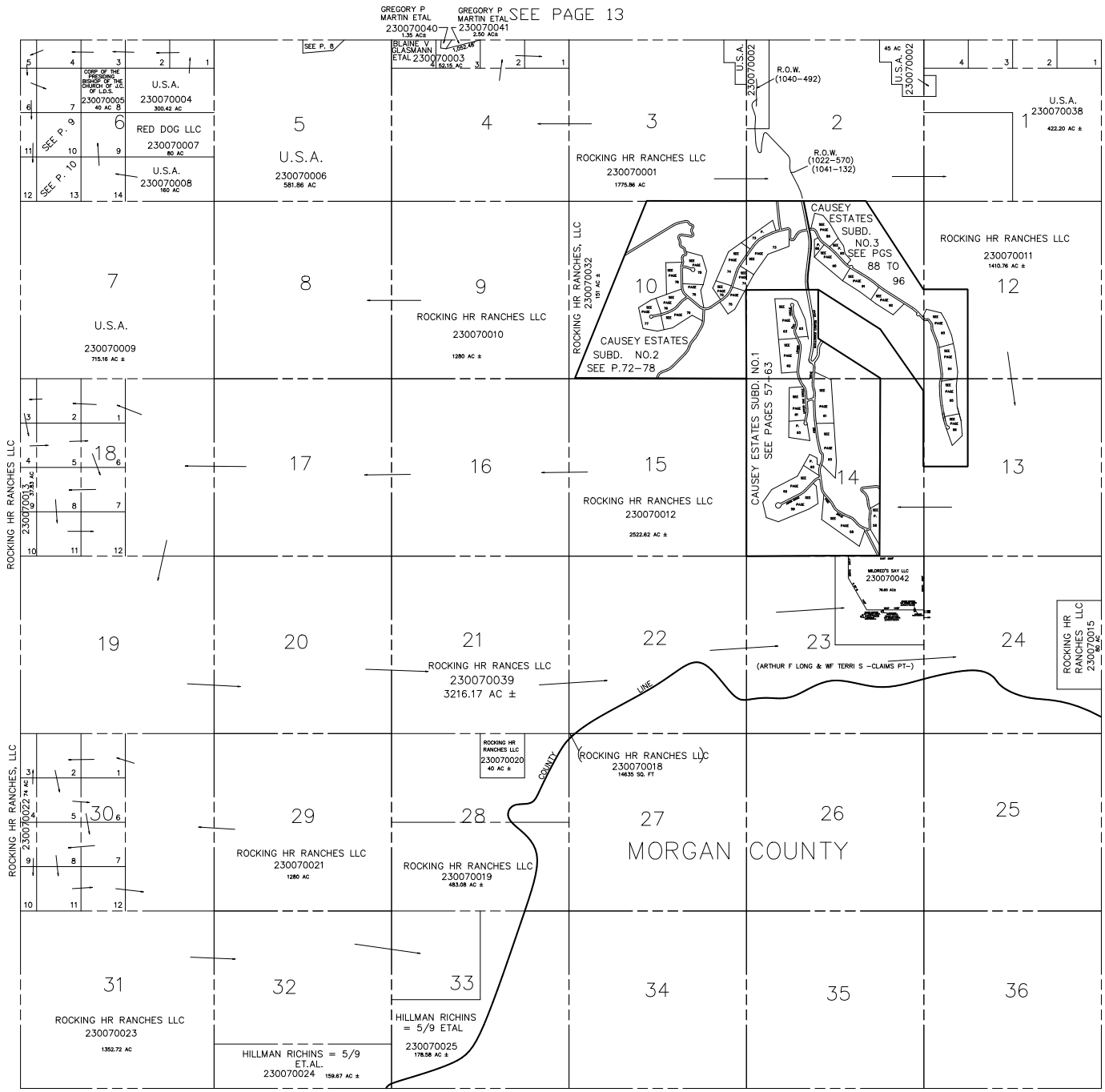
T.6N., R.3E., S.L.B. & M.
 IN WEBER COUNTY
 SCALE 1" = 2400'

TAXING UNIT: 58

SEE PAGE 13

SEE PAGE 1
 SEE PAGE 14
 SEE PAGE 17
 SEE PAGE 36
 SEE PAGE 44

SEE PAGE 11



NOTE: WEBER/MORGAN ASSESSMENT LINE
 CHANGED TO COUNTY LINE - 1998